		No. Issue Date Page	VSB 25-21-01 05 March. 2 <sup>nd</sup> , 2026 1 of 21
---	--	------------------------------	--

<p>Title <b>VENDOR SERVICE BULLETIN</b></p> <p>Subject <b>SCHROTH RFR-Buckle incl. Pad Inspection and Replacement</b></p> <p>Part Numbers (BK) SL 10.xY, (BK) SL 11.xY, (BK) SL 12.xY, (BK) SL 14.xY, (BK) SL 15.xY, (BK) SL 16.xY, (BK) SL 17.xY, (BK) SL 10.xxY, (BK) SL 11.xxY, (BK) SL 12.xxY, (BK) SL 14.xxY, (BK) SL 15.xxY, (BK) SL 16.xxY, (BK) SL 17.xxY</p> <p>Summary This Vendor Service Bulletin (VSB) describes the inspection and replacement procedure of SCHROTH RFR-Buckle incl. Pad having cracks in the bottom cover</p>
--

**A ACCEPTANCE PAGE**

	Company	Name	Function	Date / Signature
Author	SSPG	Zaid Shaikh	Requirements & Verification Engineer	
Approver	SSPG	Janina Brüggemann	TL Application & Certification Aero	
Authorizer	SSPG	André Kickuth	Manager Quality Strategy	

**B EXPORT CONTROL CLASSIFICATION**


The technical data in this document are released for publication – class: not restricted. Items covered by this VSB may be subject to export control under the Export Administration Regulations (EAR), 15 CFR parts 730-774 and ECCN 9A991. For further information, please contact your POC or the SCHROTH Export Control Team at TeamExp@eu.schroth.com

### C LIST OF REVISIONS

Issue	Date	Effect on page(s)	Reason for Revision
01	Sep. 04 <sup>th</sup> , 2025	all	first issue
02	Sep. 15 <sup>th</sup> , 2025	All 2, 7 5 8  12-20	Removed restraint harness subassembly as replacing part; Removed CMM references; Added installer Changed trained/qualified to authorized; Adding details of replacing the buckle incl. pad and inspection check
03	Oct. 14 <sup>th</sup> , 2025	all 06, 20  12 13  7, 21 21	Removed Proprietary Note Changed contact to Customer Service Updated Class 3 pictures Added returning information for affected buckles Updated contact person Added attachment
04	Nov. 06 <sup>th</sup> , 2025	1  6, 9 8  10  13	Added Export Control Classification Spelling errors corrected Wording changed to light is mandatory for inspection and a magnifier optional Added [...]or within 6 months, whatever comes first. [...] Rename chapter 2.3 to Replacing SCHROTH RFR Buckle incl. Pad
05	Mar. 2 <sup>nd</sup> , 2026	5  6  6,10 7  9  13  14 15 16	Caution statement grammatically corrected Damage Class 2 added, reference Table 1 added Singular/Plural corrected Added EASA Form 1, FAA 8130, adjusted grammatical errors Caution statement changed to Notes SCHROTH's Quality assurance address updated Buckle naming further cleared Reference paragraph corrected Picture 7 name corrected

**D TABLE OF CONTENT**

A	ACCEPTANCE PAGE.....	1
B	EXPORT Control classification.....	1
C	LIST OF REVISIONS .....	2
D	TABLE OF CONTENT.....	3
E	list of tables .....	4
F	List of Pictures.....	4
G	LIST OF ABBREVIATIONS.....	4
H	WARNINGS, CAUTIONS, NOTES.....	5
I	Definition .....	5
J	SAFETY PRECAUTIONS .....	5
1.	PLANNING INFORMATION.....	6
1.1	Effectivity .....	6
1.2	Concurrent Requirements.....	6
1.3	Reason .....	6
1.4	Description.....	6
1.5	Compliance.....	6
1.6	Safety Intent.....	6
1.7	Approval.....	7
1.8	Manpower .....	7
1.9	Material - Cost and Availability.....	7
1.10	Tooling.....	8
1.11	Weight and Balance.....	8
1.12	Electrical Load Data.....	8
1.13	References .....	8
1.14	Other Publications Affected .....	8
2.	ACCOMPLISHMENT INSTRUCTIONS.....	9
2.1	General.....	9
2.2	Inspection of the SCHROTH RFR Buckles incl. Pad .....	9
2.2.1	Identification of Buckle Type.....	9
2.2.2	Inspection Procedure.....	10
2.3	Replacing SCHROTH RFR Buckle incl. Pad .....	13
2.3.1	Order and Returning Buckles .....	13
2.3.2	Replacing the Buckle .....	14
2.3.3	Inspection / Check .....	19
3.	Material Information .....	21
4.	Attachment.....	21

		No. Issue Date Page	VSB 25-21-01 05 March. 2 <sup>nd</sup> , 2026 4 of 21
---	--	------------------------------	--

**E LIST OF TABLES**

Table 1: Crack Classification .....10  
Table 2: Buckle Position Code..... 14

**F LIST OF PICTURES**

Picture 1: Position of the Buckle P/N .....9  
Picture 2: Acceptable Cracks – Class 1 and 2..... 11  
Picture 3: Acceptable Crack – Class 2 ..... 11  
Picture 4: Unacceptable Crack – Class 3 .....12  
Picture 5: Example Buckle incl. Pad P/N ..... 13  
Picture 6: Buckle Fixed Position ..... 15  
Picture 7: Detachable Latches Released (BK SL 10.3Y shown)..... 15  
Picture 8: Pin Pushed Down ..... 16  
Picture 9: Remove the Buckle ..... 16  
Picture 10: Pin Pushed Down and Latch Inserted ..... 17  
Picture 11: Insert Latch Completely ..... 17  
Picture 12: Attached Buckle..... 18  
Picture 13: Insert All Detachable Latches ..... 19  
Picture 14: Latches Inserted into the Buckle.....20  
Picture 15: Rotate the Actuator to Eject the Latches .....20  
Picture 16: Detachable Latches Ejected .....21

**G LIST OF ABBREVIATIONS**

CMM	Component Maintenance Manual
ETSO	European Technical Standard Order
EXW	Ex Works
LH	Left Hand
RFR	Regressive Force Release
RH	Right Hand
SSPG	SCHROTH Safety Products GmbH
TSO	Technical Standard Order
VSB	Vendor Service Bulletin

## H WARNINGS, CAUTIONS, NOTES

Read and obey all WARNINGS, CAUTIONS and NOTES in this VSB.

### **WARNING:**

Warnings tell technicians how to use materials, procedures, or limits which must be followed accurately to prevent injury to people.

### **CAUTION:**

Cautions tell technicians about the procedures which they must follow to prevent damage to equipment.

### **NOTE:**

Notes tell technicians about the procedures which make the job easier.

## I DEFINITION

Harness Restraint System	Entire restraint system consisting of shoulder belt assembly, lap belt assembly and crotch strap (if applicable) The buckle incl. pad can be permanently attached to either the LH or RH lap belt part, or the crotch strap
Subassembly	Each individual restraint strap: SR/ and SL/: for single shoulder belts RH and LH S/: for Y-shoulder belts BR/ and BL/: for lap belts RH and LH C/: for Crotch Straps

## J SAFETY PRECAUTIONS

- CAUTION** DO NOT DISASSEMBLE THE HARNESS RESTRAINT SYSTEM BEYOND THE MAIN PARTS: SHOULDER BELT LEFT, SHOULDER BELT RIGHT, LAP BELT LEFT, LAP BELT RIGHT AND CROTCH STRAP
- CAUTION** LET ONLY AUTHORIZED AIRCRAFT GROUND-PERSONNEL REPLACE THE SUBASSEMBLIES INSTALLED INTO THE AIRCRAFT.
- CAUTION** LET ONLY MANUFACTURER OR AN APPROVED MAINTENANCE CONTRACTOR, WHO HAS APPROVAL FROM THE AVIATION AUTHORITIES, REPAIR THE HARNESS RESTRAINT SYSTEM INSTALLED INTO THE AIRCRAFT.

## 1. PLANNING INFORMATION

### 1.1 Effectivity

This Vendor Service Bulletin (VSB) has been issued to advise operators / installers of potential issues with SCHROTH type 1-()-() and 4-()-() harness restraint systems. The affected harness restraint systems use one of the following SCHROTH rotary buckle types incl. buckle pad:

(BK) SL 10.xY, (BK) SL 11.xY, (BK) SL 12.xY, (BK) SL 14.xY, (BK) SL 15.xY, (BK) SL 16.xY, (BK) SL 17.xY, (BK) SL 10.xxY, (BK) SL 11.xxY, (BK) SL 12.xxY, (BK) SL 14.xxY, (BK) SL 15.xxY, (BK) SL 16.xxY, (BK) SL 17.xxY

### 1.2 Concurrent Requirements

None

### 1.3 Reason

Harness Restraint systems using one of the affected rotary buckle types with pads may show cracks on the bottom cover of the buckle. This Vendor Service Bulletin describes the inspection and replacement procedure.

### 1.4 Description


This Vendor Service Bulletin provides instructions to inspect and in case of damage caused by cracks, to classify any observed damage on the SCHROTH RFR buckles incl. pads. Furthermore, this VSB provides instructions to replace the affected buckle incl. pad.

### 1.5 Compliance

The application of this Vendor Service Bulletin is mandatory for all SCHROTH harness restraint systems, using SCHROTH RFR buckle incl. buckle pad. The buckle incl. pad must be checked during regular pre-flight check.

### 1.6 Safety Intent

Buckles incl. pad showing damage classified as Class 2 and Class 3 in accordance with Chapter 2.2.2 must be replaced, please refer to Table 1 for further information.

		No. Issue Date Page	VSB 25-21-01 05 March. 2 <sup>nd</sup> , 2026 7 of 21
---	--	------------------------------	--

## 1.7 Approval

ETSO-C114 and/or TSO-C114

Replacement of the buckle incl. Pad must be done by authorized aircraft ground personnel.

Replacements of the parts will be provided with EASA Form 1 or FAA Form 8130. |

## 1.8 Manpower

~ 3 min. per harness restraint system

**NOTE: THE TIME SPECIFIED HERE REFERS EXCLUSIVELY TO THE INSPECTION AND REPLACEMENT OF THE AFFECTED BUCKLE INCL. PAD. ANY ACTIVITIES TO ENSURE ACCESSIBILITY ARE NOT CONSIDERED HERE AND MAY REQUIRE ADDITIONAL WORK AND TIME.**

## 1.9 Material - Cost and Availability

Replacement parts can be ordered from SCHROTH. Delivery conditions are Ex Works (EXW), INCOTERMS 2020.

For details please contact:

SCHROTH Safety Products GmbH  
Customer Service  
Im Ohl 14  
59757 Arnsberg-Neheim

Telephone: +49 (0) 2932 / 9742-0  
Fax: +49 (0) 2932 / 9742-42  
E-Mail: [customer.service@eu.schroth.com](mailto:customer.service@eu.schroth.com)  
Internet: [www.schroth.com](http://www.schroth.com)

### **1.10 Tooling**

A light, e.g. torch, is needed to inspect the buckle. A magnifying glass can be used as an optional aid.

For replacing the affected buckle incl. pad, a needle or similar device with a diameter of 2 mm is needed.

### **1.11 Weight and Balance**

Not Applicable

### **1.12 Electrical Load Data**

Not Applicable

### **1.13 References**

None

### **1.14 Other Publications Affected**

None

## 2. ACCOMPLISHMENT INSTRUCTIONS

### 2.1 General

**CAUTION** REPLACEMENT OF THE BUCKLE INCL. PAD WHICH ARE INSTALLED IN THE AIRCRAFT MUST BE DONE BY AUTHORIZED AIRCRAFT GROUND PERSONNEL.

**CAUTION** ANY REWORK BEYOND THE BELOW DESCRIBED MUST BE CARRIED OUT BY THE HARNESS RESTRAINT SYSTEM MANUFACTURER.

**NOTE** ONE REPLACEMENT UNIT IS REQUIRED PER HARNESS RESTRAINT SYSTEM.

### 2.2 Inspection of the SCHROTH RFR Buckles incl. Pad

#### 2.2.1 Identification of Buckle Type

Only SCHROTH buckle types with buckle pad K 37 are affected:  
(BK) SL 10.xY, (BK) SL 11.xY, (BK) SL 12.xY, (BK) SL 14.xY, (BK) SL 15.xY,  
(BK) SL 16.xY, (BK) SL 17.xY, (BK) SL 10.xxY, (BK) SL 11.xxY, (BK) SL 12.xxY,  
(BK) SL 14.xxY, (BK) SL 15.xxY, (BK) SL 16.xxY, (BK) SL 17.xxY

x/xx – in P/N refers to buckle configuration, like fixed point (left hand, right hand or crotch strap).

The buckle P/N is located inside the buckle pad. Refer to Picture 1.

*Picture 1: Position of the Buckle P/N*



### 2.2.2 Inspection Procedure

1. Check SCHROTH RFR buckle incl. pad visually for lines / cracks.
2. Validate crack by running over the potential crack with your fingertips.
3. Table 1 shows the findings classification and resulting actions required depending on the observation of the inspection.

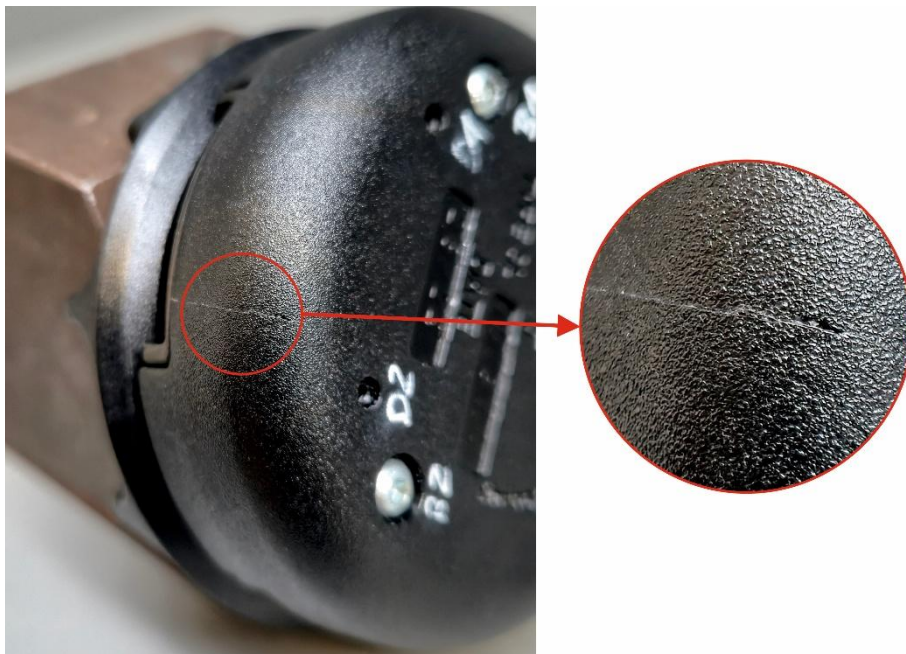
*Table 1: Crack Classification*

Class	Finding	Conclusion	Safety Statement	Action	Reference
1	Visible line present cannot be felt with the fingertips	system is in serviceable condition and safe for flight	No safety risk and fully usable.	No action needed	Picture 2 (#1)
2	Hairline crack can be felt with the fingertips	system is in serviceable condition and safe for flight	No safety risk and fully usable, if the cracks do not get any bigger.	Harness restraint part must be checked regularly and must be replaced during next scheduled service or within 6 months, whatever comes first. To be checked during pre-flight check.	Picture 2 (#2) and Picture 3
3	Deep cracks, severe material damage, internal parts can move or fall out.	system unserviceable, not safe for flight	Safety risk, non-function	Harness restraint part must be replaced immediately / before next use of the harness restraint	Picture 4

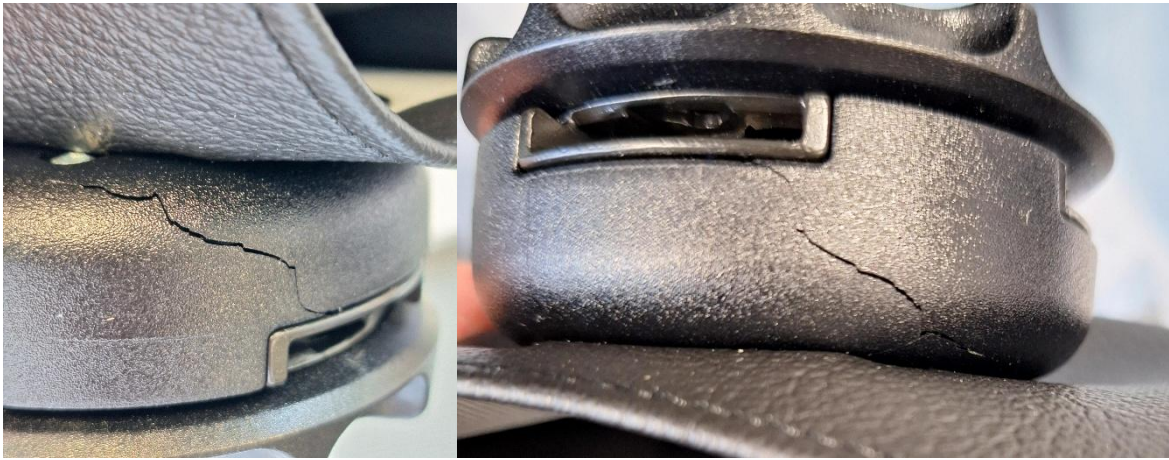
*Picture 2: Acceptable Cracks – Class 1 and 2*



*Picture 3: Acceptable Crack – Class 2*



*Picture 4: Unacceptable Crack – Class 3*



## 2.3 Replacing SCHROTH RFR Buckle incl. Pad

### 2.3.1 Order and Returning Buckles

(1) Identify the buckle P/N, refer to Picture 5.

**NOTE: IF THE AFFECTED BUCKLE INCL PAD INCLUDES CUSTOMIZED PLATING, PLEASE CONTACT SCHROTH CUSTOMER SERVICE FOR REPLACEMENT OPTIONS BEFORE PLACING A PURCHASE ORDER.**

(2) Order replacing part

Contact SCHROTH customer service (refer to Material - Cost and Availability) by providing the following minimum information:

- full harness restraint system P/N and the corresponding buckle incl. pad P/N
- manufacturing date of buckle incl. pad refer to Picture 5.
- quantity of replacing parts needed
- your contact information

(3) Fill out RMA form (see attachment) and returning affected buckles to:

SCHROTH Safety Products GmbH  
Quality Assurance  
Im Ohl 12a  
59757 Arnsberg-Neheim

*Picture 5: Example Buckle incl. Pad P/N*



### 2.3.2 Replacing the Buckle

#### (1) Removing the Buckle

- a) Make sure all detachable latches are released, by rotating the actuator. Refer to Picture 7.
- b) Use a small tool with a diameter of 2 mm, e.g. a needle.
- c) Insert the tool into the hole above the permanently fixed latch of the actuator of the damaged buckle and push the pin down. Refer to Picture 8.
- d) Remove the damaged buckle. Refer to Picture 9.
- e) Use new buckle incl. pad.

**CAUTION: MAKE SURE TO ATTACH THE BUCKLE TO THE IDENTICAL RESTRAINT HARNESS SUBASSEMBLY.**

- f) Identify the correct buckle position. The first code after the period describes the buckle position, refer to Table 2 and Picture 6.

Example:

SL 10.xY – buckle attached to crotch strap, refer to Picture 5.

x: refers to buckle fix position, refer to Table 2

*Table 2: Buckle Position Code*

Code	Buckle Position
0	Right Lap Belt Part (Single Latch)
3	Crotch Strap (Single Latch)
5	Left Lap Belt Part (Single Latch)
6	Left Lap Belt Part and Left Shoulder Belt Part (Dual Latch)
7	Right Lap Belt Part and Right Shoulder Belt Part (Dual Latch)
8	Right Lap Belt Part (Crotch Strap Blocked) (Single Latch)
9	Left Lap Belt Part (Crotch Strap Blocked) (Single Latch)

- g) Use a small tool with a diameter of 2 mm, e.g. a needle.
- h) Insert the tool into the hole of the actuator where the permanently fixed latch should be inserted and push the pin down. Refer to Picture 10.
- i) Insert the latch until it touches the tool. Make sure the pin is also pushed down by the latch.
- j) Remove the tool and fully insert the latch. Refer to Picture 11 and Picture 12.

- k) Apply tension to the permanently attached latch. Make sure that the buckle holds the latch safely.
- l) Follow Inspection/Checks instructions. Refer to 2.3.3.

*Picture 6: Buckle Fixed Position*



*Picture 7: Detachable Latches Released (BK SL 10.3Y shown)*



*Picture 8: Pin Pushed Down*



*Picture 9: Remove the Buckle*



*Picture 10: Pin Pushed Down and Latch Inserted*



*Picture 11: Insert Latch Completely*



*Picture 12: Attached Buckle*



### 2.3.3 Inspection / Check

#### (1) Procedure

##### a) Buckle and Latch

1. Put the latch into the buckle until you can hear a clear click sound. Refer to Picture 13.
2. Apply tension to the latch. Make sure that the buckle holds the latch safely.
3. Repeat step 1 and 2 until all detachable latches are attached to the buckle. Refer to Picture 14.
4. Rotate the actuator and release all detachable latches. Refer to Picture 15.
5. The permanently fixed latch shall not release.

*Picture 13: Insert All Detachable Latches*



*Picture 14: Latches Inserted into the Buckle*



*Picture 15: Rotate the Actuator to Eject the Latches*



*Picture 16: Detachable Latches Ejected*



### **3. Material Information**

SCHROTH Safety Products GmbH  
Customer Service  
Im Ohl 14  
59757 Arnsberg-Neheim

Telephone: +49 (0) 2932 / 9742-0  
Fax: +49 (0) 2932 / 9742-42  
E-Mail: [customer.service@eu.schroth.com](mailto:customer.service@eu.schroth.com)  
Internet: [www.schroth.com](http://www.schroth.com)

### **4. Attachment**

SCHROTH RMA Form



# Return Material Authorization

## RMA#:25-09-25-99-VSB

Complete this form and include with your items being returned.  
**\*\*This form will help to accelerate your Return process\*\***

### INSTRUCTIONS

1. Please complete this RMA Form and send to back to your Customer Service Representative.
2. Please return the product with **ORIGINAL PACKING** accompanied by a **COPY** of the **ORIGINAL ORDER** and this RMA Form.
3. Please mark the RMA number on the shipping label.
4. **The RMA number must appear on all related correspondence, shipping papers, and forms.**

**PLEASE SEND ALL RETURNS TO:**  
 Maintenance Department  
 SCHROTH Safety Products GmbH  
 Im Ohl 12a, 59757 Arnsberg  
 Germany  
 Phone +49 2932 9742-0

CUSTOMER DETAILS			
<b>COMPANY NAME</b>			
<b>ADDRESS</b>			
<b>CITY</b>		<b>ZIP CODE</b>	<b>COUNTRY</b>
<b>PHONE</b>		<b>FAX</b>	
<b>CONTACT NAME</b>			<b>EMAIL ADDRESS</b>

PRODUCT DETAILS			
ORIGINAL CUSTOMER PO#	PART NUMBER	QTY	REASON FOR RETURN – DETAIL EXPLANATION
			Cracked buckle housing
<b>Comments</b>	According to VSB 25-21-01		

SCHROTH Safety Products GmbH, Im Ohl 14, 59757 Arnsberg, Germany  
www.schroth.com